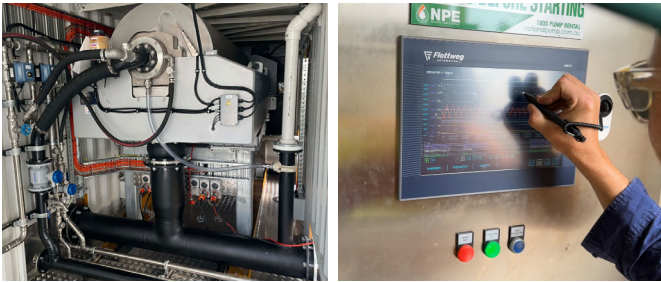


DECANTER CENTRIFUGE SOLIDS DEWATERING



This system ensures the removal of rag and grits from the biosolids before they are removed from site. This allows more options for disposal of the biosolids via beneficial reuse solutions without the concern of contamination within the final product and avoids the need to take the material to landfill. We have maintained a minimum 20% solids content for all material processed through our new mobile centrifuge which has ensured safe and efficient transport solutions when disposing from site.

NPE's proven methods for emptying anaerobic digesters ensures the material is mixed and uplifted from the tanks efficiently and safely without damage to the digester, allowing the digesters to be cleaned and returned to service in the shortest amount of time possible. This drastically reduces the operating pressure on the plant by avoiding lengthy downtime for our clients so that their digesters are returned to service quickly and back to full operating capacity.

TECHNICAL SPECIFICATIONS

Dimensions	12,200L x 2,440W x 2,590mmH
Weight	20,000kg

PUMPS

Solids Feed Progressive Cavity

Model	RLGB671
Motor	15kW (1465RPM)
Ratio	3.27 - 1
Inlet	Hard Piping
Outlet	100NB Male Camlock

Polymer Dosing Progressive Cavity

Model	RLCB571
Motor	2.2kW (1450RPM)
Inlet	50NB Female Camlock
Outlet	100NB Male Camlock

Water Pressure Multi-Stage Centrifugal

Type	CMB 10 47 I-C-A-A-P-C
Model	B-98117635P12338
Motor	240V 15 Amp
Output	10m3
Inlet	50NB Female Camlock
Outlet	Hard Piping

Macerator

Model	10000-08B150
Motor	2.2kW
Inlet	150NB Female Camlock
Outlet	Hard Piping



DECANTER CENTRIFUGE SOLIDS DEWATERING

LUBRICATION

Bowl Bearings	Automatic Grease Lubrication with 2kg supply bin
Scroll Bearings	Packed on assembly no lubrication required
Simp Drive	Oil filled with reservoir and level sensor
Screw Conveyors	Grease filled gland seal

SOLIDS HOUSING

Housing	PU-Liner
---------	----------

FEED RATE

Max m3/hr @ 0.5% Solids	120m3 (33.3L/Se)
Maximum Feed Solids	4-6%
Maximum Solids Throughout	1-2D/T
Product Solid Content	16-22%

Note: Feed rate & solid content is highly dependent on multiple feed characteristics. Eg.

- High Feed solids lower feed rate.
- Polymer dose strength
- Cake Moisture restraints, the lower the moisture content the slower the feed rate.
- Feed characteristics (Digester, aerobic, alum sludge etc)

INSTRUMENTS

Bowl RPM Indication	Proximity Switch
Scroll RPM Indication	Proximity Switch
Vibration Indicator	Motion Sensor
Simp Drive Level Sensor	Float Switch
Grease Lubrication	Level Sensor
Bearing Temperature Bowl Drive End	Temperature Sensor
Bearing Temperature Bowl Feed End	Temperature Sensor

BOWL

Speed	2920RPM (Variable)
Motor	110kW
Volume	650L
Max Acceleration Factor	3300xG
Wear Protection	Longitudinal Stainless Steel
Solids Dishcharge	Hard Metal Wear Bushing
Feed Ports	Hard Metal Wear Bushing
Outside	Tungsten Carbide Strips

SCROLL

Speed	0.5 - 10RPM
Motor	30kW
Drive	Co-rating, multi-stage planetary gearbox (Simp-Drive)
Wear Protection	Tungsten Carbide Spray to leading edge

SCREW CONVEYORS

Inclined Conveyor	5.5kW Variable Speed
Horizontal Conveyor	1.5kW Variable Speed
Wear Liners	HDPE Liners

