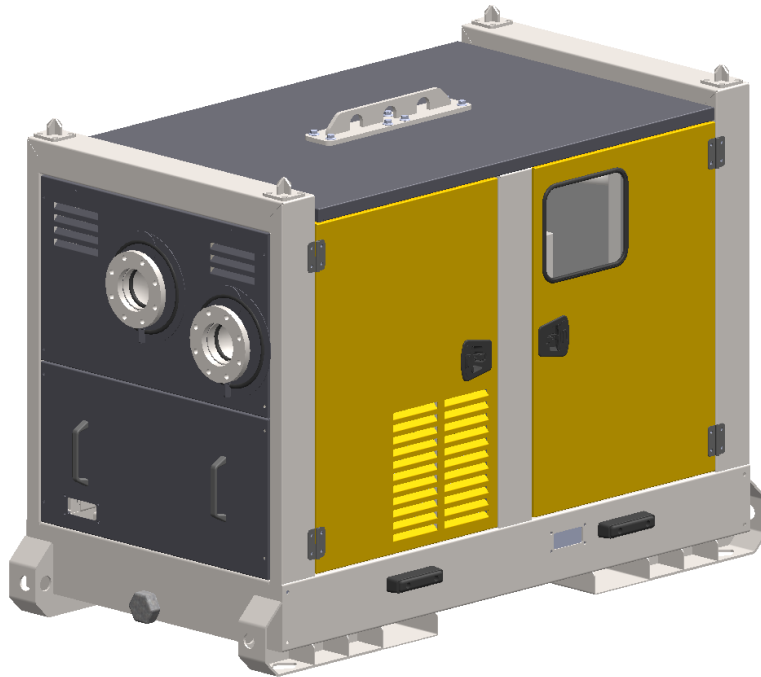


WEL PST CNP

Qmax 20 l/s (75 m³/h) - Hmax 20 m (65 ft)



WEL PST - Piston pumps

The WEL PST pump is a twin cylinder, quadruple acting, crankshaft driven piston pump. Water, air or a mixture of both are primed and discharged four times per revolution. Two crankshaft driven pistons are arranged at an angle of 90 degrees to enable four piston strokes for each revolution.

The crank timing produces a moderate pulsating action in the dewatering line that prevents clogging of the wellpoint strainers and achieves priming from greater depths. Even with suction heights of several meters the pump rapidly evacuates the air from the suction pipe and starts to pump.

Applications

Both Atlas Copco and Varisco have decades of experience in designing and producing pumps. We have put those years of expertise into providing a solutions portfolio that works across multiple applications. The WEL PST range is packed with features that not only meet, but exceed the needs of the market. We are focused on an efficient, extremely versatile pump that is suitable for many industries, including construction, general dewatering, Wellpoint systems, horizontal drainage with hoses and pumping of remediation filtered water.

Benefits

Positive Displacement pump

Positive displacement pump with constant flow and capable of simultaneously drawing air and water

Rapid "dry" priming

Up to a height of 7,5 m (24.6 ft) without the need of a vacuum priming pump

High resistance

Can run dry indefinitely without risk of damage or excessive wear of parts

Environment friendly

Low power consumption and low noise unit

Easy maintenance

High accessibility for easy inspection and maintenance which require no special skills

Long life

Economical and longer carefree service life reducing overall operating costs

Great autonomy

Up to 170 h with fuel tank of 200 L (52.8 USG)

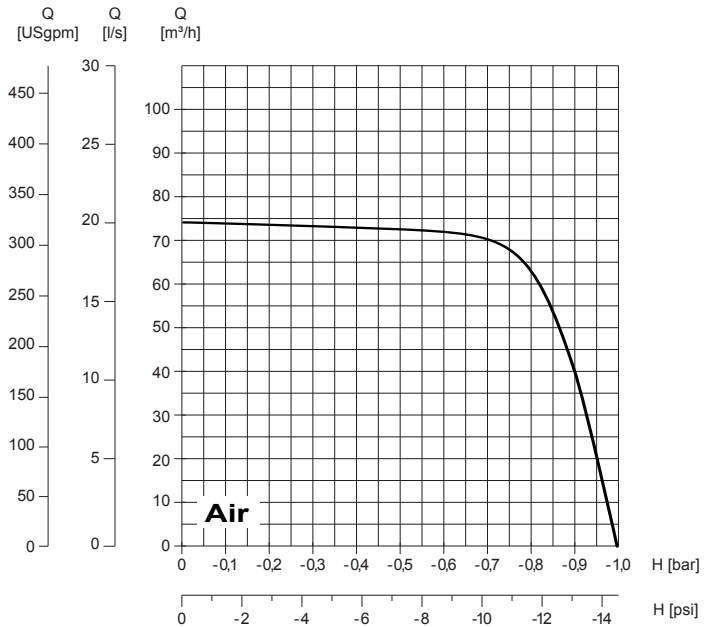
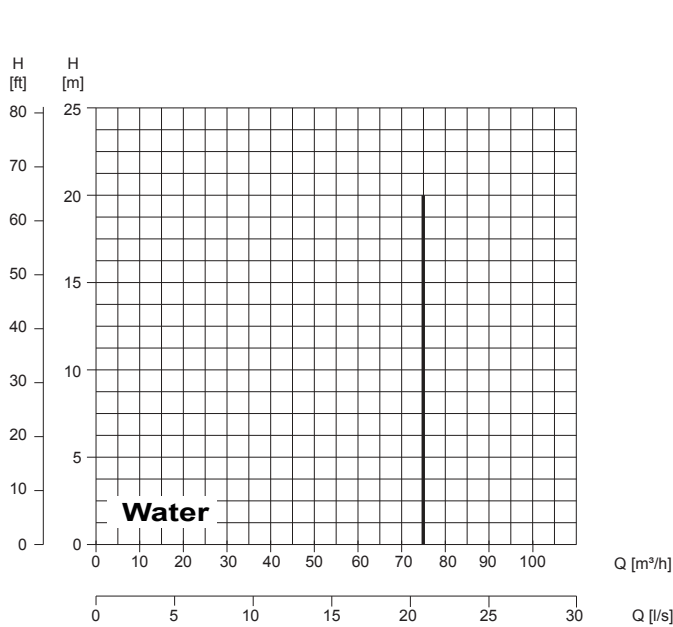


WEL PST CNP

Performance curves

Test according to UNI EN ISO 9906 standard - level 2

Test liquid: clean water, density 1,000 kg/m³



Technical data

Pump

Model	
Qmax	20 l/s - 75 m ³ /h
Hmax	20 m (65 ft)
Q max eff.	20 l/s - 75 m ³ /h
Eff. max	93%
Suction port	Flanged - DIN 125
Delivery port	Flanged - DIN 125
Materials	
Casing	EN-GJL-250 cast iron
Helical gear wheels	GJS-400 ductile iron
Shaft	Steel
Piston rod	AISI 431 stainless steel
Piston	AISI 431 stainless steel
Piston cups	Leather
Cylinders	AISI 304 stainless steel
Valves	Brass
Valves discs	NBR rubber
Valves guides	AISI 431 stainless steel



WEL PST 100

Technical data

Make	Hatz
Model	1D90
Type	Diesel direct injection, aspirated, four strokes
Displacement	997 cm ³ (61 in ³)
No. cylinders	2
Cooling	Air
Rpm type	Variable
Standard speed	2.000 rpm
EU emissions	2002/88/CE Stage V
US emissions	EPA Tier 4F
Starting	Electric
Starting voltage	12 V
Oil change interval	250 h
Market	Worldwide

Speed [rpm]	1500
Consumption [l/h]	1,2
Power [kW]	6,5
Power [HP]	8.7

Control panel

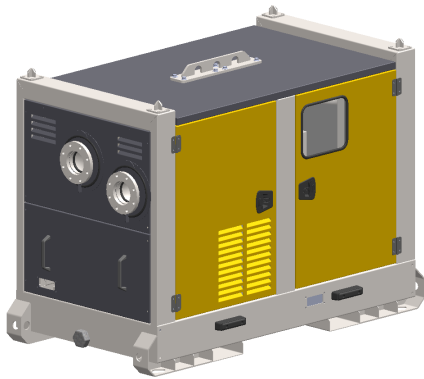
Manual operation
Hour meter
LCD display
Engine failure alarms with LED lights in case of: <ul style="list-style-type: none">- low oil pressure- engine overheating- lack of battery charging
Throttle rod



WEL PST 100

Arrangements

Sound attenuated canopy



WEL PST 100 CNP

Dimensions	1100 x 2255 x 1615mm
Material	S235JR EN 10025-2 carbon steel
Coatings	Epoxy powder, average thickness of 80 µm
Color	Yellow and grey Atlas Copco (standard)
Features	Galvanised base, stackable
Battery	Acid charge Pb-Ca maintenance free, 12 V - 65 Ah - 580 A
Tank	200 L (52.8 USG)
Drip pan	300 L (79.2 USG, 150% of the total volume of the tank)
Emergency stop	Outside the canopy
Locking keys	Control panel door and canopy doors
H suction port	1 m
Weight	1.970kg

